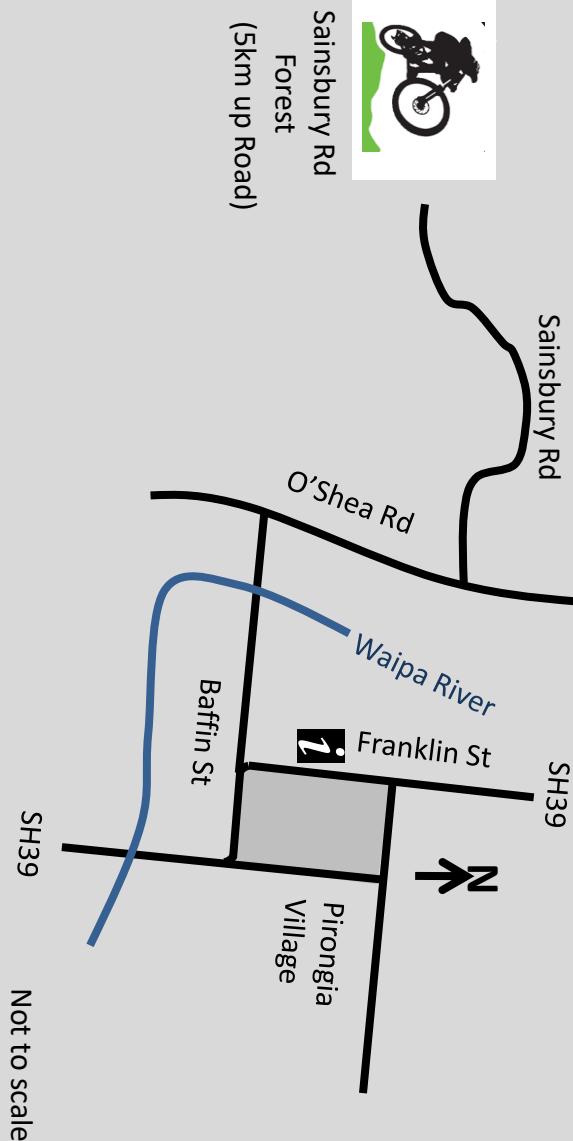


About the Waipa Mountain Bike Club

- The Waipa Mountain Bike club was formed in 2008 to promote mountain biking in the Waipa area.
- The club has an ongoing track building programme on Mt Pirongia.
- We have regular rides up Sainsbury Rd every Thursday evening.
- Support mountain biking in the Waipa area by becoming a club member.
- To join or find out more see our Facebook page (Waipa Mountain Bike Club) or www.waipamtb.org.nz



Pirongia Mountain Biking Map



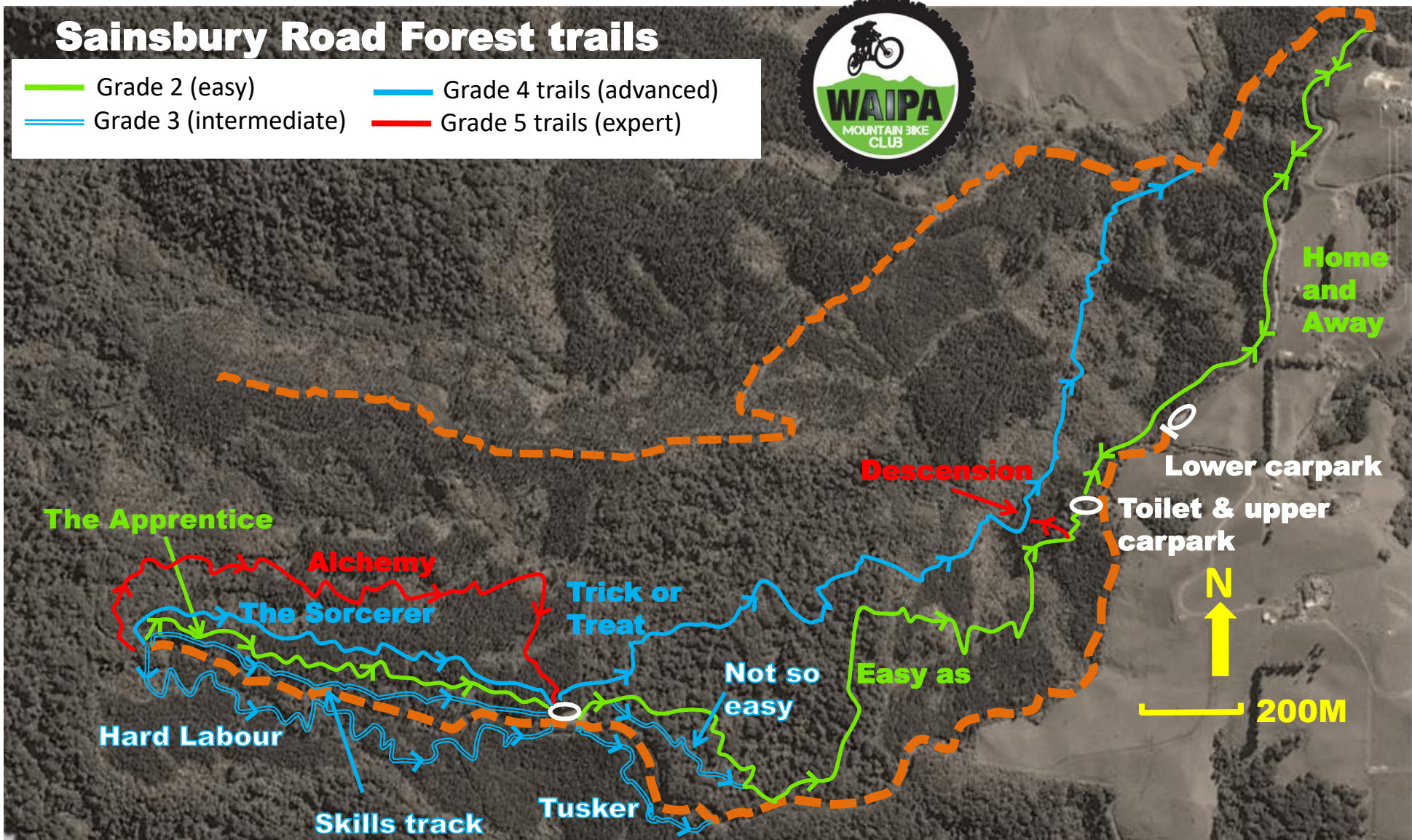
Kindly printed by:



Sainsbury Road Forest trails



- Grade 2 (easy)
- Grade 3 (intermediate)
- Grade 4 trails (advanced)
- - - Grade 5 trails (expert)



SUPPORTED BY



Please note cell phone coverage is limited and drinking water is not available. Please observe MTB trail direction and ride considerately.